

2009 PLAYBILL

*Gateway*  
PLAYHOUSE 60  
*Years of  
Theater*

**MESHUGGAH-Nuns!**

**JUNE 17 - JULY 5**



*Gateway Theatre circa 1950*

# W<sup>m.</sup>J. O'Neill

*Sales Exchange Co., Inc.  
Jewelers and Collateral Loanbrokers*

Classic and  
Contemporary



Platinum  
and Gold

Jewelry designs that will  
excite your senses.

Expert Jewelry Repairs

One East Main St., Patchogue 631.289.9899 [www.wmjoneills.com](http://www.wmjoneills.com)

Mention this ad for 10% discount on purchase

# Pine Grove Inn

## RESTAURANT

*Established In 1910. Famous for almost 100 Years.*

*Visit the Pine Grove Inn and Experience its Old World Charm*

Pine Grove Inn overlooks the lovely Swan River in Patchogue



- Open for Lunch and Dinner Tuesday through Sunday
- Join us every Friday from 4-6pm for Happy Hour & Complimentary Buffet
- Live Music Friday & Saturday Evenings

**Now Serving Sunday Brunch 11am-2pm**

- Extensive menu is filled with something for everyone
- Fresh Local Seafood • Prime Steaks
- Traditional German Classics
- Catering for all occasions – (3 separate rooms)

### New Prix Fixe Menu

#### \$24.95 Lunch & Dinner

Soup or Salad • Entrée • Dessert • Coffee • Tea

Available Sunday through Thursday

Not available on holidays or for parties greater than fifteen.



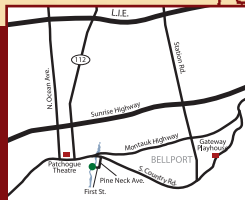
Tuesday & Wednesday  
**Lobsterfest**

Thursday  
**Prime Rib Night**



**1 First Street, East Patchogue • 631-475-9843**

Check our website: [www.pinegroveinn.com](http://www.pinegroveinn.com)  
for the current entertainment schedule.  
Closed Mondays



**PRESENT THIS VOUCHER FOR**  
**\$5 OFF LUNCH**  
on checks of \$35 or more

Expires July 12, 2009. Reservations suggested. Not valid on prix fixe menu. With this voucher. Not valid with other offers. One voucher per couple. Not valid on holidays.

**PRESENT THIS VOUCHER FOR**  
**\$10 OFF DINNER**  
on checks of \$80 or more

Expires July 12, 2009. Reservations suggested. Not valid on prix fixe menu. With this voucher. Not valid with other offers. One voucher per couple. Not valid on holidays.



TRIO

at the  
Holbrook  
Country  
Club

## At Work, At Play or After The Play

- Excellent** ▶ Located in Holbrook, Just Minutes From Gateway Playhouse.
- Exquisite** ▶ Enjoy lunch or dinner at Frederick & Co. Restaurant.
- Elegant** ▶ Schedule your next affair at Trio's refurbished catering facility.

---

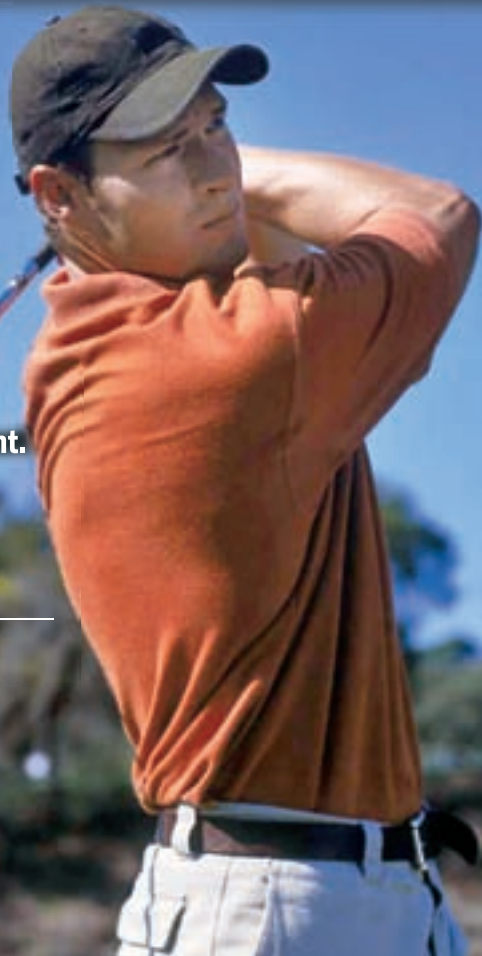
700 Patchogue-Holbrook Road  
Holbrook, New York 11741

---

**(631) 585-4433**

---

[www.triofinefood.com](http://www.triofinefood.com)



*Catering ▼ Fine Dining ▼ Golf*

**Celebrating  
10 Years  
in Bellport**

# BELLPORT JEWELERS & GALLERIES

Master goldsmith, gemologist, numismatist & watch experts on staff  
**Visit us in Bellport Village before the show or schedule a house call!**

*Pietro Romano of Bellport Jewelers & Galleries  
 has been named the exclusive designer of the  
 Leonard's of Great Neck wedding jewelry line!  
 Let Master craftsman Pietro Romano create for you!  
 He can use your old gold & stones.  
 Personal service is our number one priority.*

**Buying ALL Gold, Silver,  
Platinum Jewelry  
& Watches**

.925 Silver Flatware  
 10K, 14K, 18K, 22K, 24K  
 .925 Sterling  
 dental gold

**WE EVALUATE & BUY IT ALL!**

**Diamonds**

1/4 ct .....	up to \$225
1/2 ct .....	up to \$1,500
1 ct .....	up to \$6,000
2 ct .....	up to \$19,000
3 ct .....	up to \$40,000
5 ct .....	up to \$60,000

**We buy all styles and shapes.  
Even broken stones.**

**Pre-1965 US SILVER Coins**  
**All proof sets and mint sets/ingots.**  
**Paying 850% over Face Value!**

Silver Nickels .....	1942-1945 .35 & up
Silver Dimes .....	1964 & before .85 & up
Silver Quarters .....	1964 & before \$2.12 & up
Silver Halves .....	1964 & before \$4.25 & up
Silver Clad Halves	1965-1970 \$1.35 & up
Silver Dollars .....	1878-1904 \$14.00 & up
Silver Dollars .....	1921-1935 \$12.00 & up

**US Gold Coins Before 1933**  
**Also Maple Leafs, Eagles, Pesos,  
Pandas, Kruggerands**

\$1 Gold .....	\$160 and up
\$2.5 Gold .....	\$185 and up
\$3 Gold .....	\$700 and up
\$5 Gold .....	\$300 and up
\$10 Gold .....	\$500 and up
\$20 Gold .....	\$900 and up
\$50 Gold .....	\$12,000 and up

Prices are for undamaged, XF and better coins  
**Certified PCGS and NGC coins wanted**



MEMBER  
JEWELERS OF  
AMERICA



**5 BELLPORT LANE, BELLPORT, NY 11713**  
**631-286-7700 • WWW.BELLPORTGALLERIES.COM**

# 1960's GATEWAY to Hollywood

Welcome to installment two of our retrospective glance back thru time.

In our first Season Playbill, you read about the early 1950s, Gateway's founding family- the artistic Pomeran siblings and their supportive parents. Ten years after its opening season, reviewed nation-wide for its skillful productions, and uniquely individual in its training of young actors, Gateway is viewed by the theatrical community as a place to train new stars-to-be, as well as a place to scout diamonds in the "sawdust." Columbia Pictures runs a "talent farm" and the hotel which was the original business for the founding family, is now actor/staff housing. The MainStage Theater is built. Harry Pomeran, helms the multi faceted operation with the assistance of the two remaining Pomeran kids- David Sheldon Pomeran on the producing and directing staff, and little sister Ruth Pomeran-Allan, heading up the school training programs and performing. Sally moves to Baltimore to teach at a University and raise a family.

*Here's how we looked in the early to mid 1960's*



**FLOWER DRUM SONG,**  
Barn Theater, 1961

**MUSIC MAN,** New Main  
Stage theater, 1962

Apprentices and Technicians,  
preparing **SHOWBOAT,** 1967



Harry C. Pomeran, casting, circa 1963



JOYCE SELZNIK Casting Director,  
Columbia Pictures and her "discovery"

**Newsweek**

**60**  
Years of  
Theater



**The Straw-Hat Theater Where Stars Are Born**

**GATEWAY  
PLAYHOUSE**

HILLPORT, LONG ISLAND, NEW YORK

Information For

**ACTORS-IN-TRAINING**



*The Exclusive  
Talent Farm  
for  
Columbia  
Pictures*



**ACTORS — WRITERS — DIRECTORS — TEACHERS**



H.L. Hunt, "The Father of the Dollar Bill"

# The Show Goes On... Before The Play & After The Matinee, Bellport Village Welcomes You

## Don't Let Pain Interfere With Your Life!

Dr. Joseph Merckling can treat your problems giving you relief so you can live a more complete and full life.



**You and your body deserve it! Pain can become a thing of the past!**  
**Massage Therapy and Acupuncture by Anthony Cerabino.**

**Providing Relief For:** Neck and Back Pain/Stiffness • Migraines • Sciatica  
Shoulder and Knee Pain/Stiffness • Low Level Laser Therapy Offered  
Headaches • Foot Pain/Plantar Fasciitis

Most Insurances accepted • Auto Accidents/No Fault • Worker's Comp



Now offering  
digital foot scans  
for Custom  
orthotics



**Merckling Family Chiropractic, P.C.**

Dr. Joseph R. Merckling, 16-2 Station Road, Bellport - 631-286-2300 Fax 286-4615



## THE BELLPORT

Steps away from the Gateway Playhouse



New York Times Review

159 South Country Road, Bellport, New York 11713  
(631) 286-7550



8 Bellport Lane, Bellport Village, NY 11713  
631-286-0044

Located across the street from Porters on the Lane  
email us at [CarlaMarlas@hotmail.com](mailto:CarlaMarlas@hotmail.com)

Creative Framing  
**Bellport Arts**  
& FRAMING STUDIO  
Inc.  
147 South Country Rd.,  
Bellport  
**803-6076**  
Preserves Memories

## Bellport Festival July 25th



Presented by the Bellport Chamber of Commerce  
& the Village of Bellport

Sign up today for your **FREE**  
Bellport Discount Card!

For Event Schedule & Discount Card  
go to: [www.bellportchamber.com](http://www.bellportchamber.com)





Presents

# **Meshuggah-Nuns!**

The Ecumenical Nunsense

By Dan Goggin

*Starring*

**ERIN CROSBY**      **JOY LYNN MATTHEWS**  
**KRISTEN MENGELKOCH**      **KATHERINE PECEVICH**

*And*

**DAVID EDWARDS**

Producer

**PAUL ALLAN**

Associate Producer  
**JEFF BELLANTE**

General Manager  
**GALE EDWARDS**

Artistic Director

**ROBIN JOY ALLAN**

Production Manager  
**BRIAN LOESCH**

Company Manager  
**MICHAEL BAKER**

Wardrobe Supervisor  
**MARIANNE DOMINY**

Lighting Design  
**KIM HANSON**

Scenic Designer  
**BARRY AXTELL**

Production Stage Manager  
**PATRICIA MASON**

Musical Direction by  
**BRENDAN WHITING**

Directed and Choreographed by  
**DAVID EDWARDS**

# CAST OF CHARACTERS

## PRINCIPALS

Reverend Mother.....KATHERINE PECEVICH\*  
Howard Liszt.....DAVID EDWARDS\*  
Sister Hubert.....JOY LYNN MATTHEWS\*  
Sister Amnesia.....KRISTEN MENGELKOCH\*  
Sister Robert Anne.....ERIN CROSBY\*

## UNDERSTUDIES

Ms. Pecevich.....JESSICA HARRISON  
Mr. Edwards.....MICHAEL EDWARD BAKER\*  
Ms. Matthews.....JESSICA HARRISON  
Ms. Mengelkoch.....JESSICA HARRISON  
Ms. Crosby.....JESSICA HARRISON

## MUSICIANS

Conductor/  
Keyboard I.....Brendan Whiting  
Keyboard II.....Michael Santangelo  
Violin/Tambourine.....Marni Harris  
Reed/Washboard.....Michael Kendrot  
Drums.....Pete DeSalvo



The Musicians employed in this production are members of the American Federation of Musicians.



\*Actors employed in this production are members of Actors' Equity Association, the union of Professional Actors and Stage Managers in the United States.



The Director/Choreographer is a member of the Society of Stage Directors and Choreographers, Inc., an independent national labor union.

JOE 281-0376

### SHIRLEY SLEEP SHOPPE

618 Montauk Highway • Shirley, NY 11967



Complete Line of Conventional,  
Waterbeds & Futons

Dave's  
**Bellport**  
Cold Beer & Soda

Over 700  
Varieties of Beer  
Monthly Beer  
Tastings

8-Tap Growler Station • Knowledgeable Staff • Beer • Soda  
Kegs • Ice • Snacks • Cigarettes • Fine Cigars • Home Delivery

417 Station Road • Bellport NY 11713

**631.286.0760**

[www.bellportbeer.com](http://www.bellportbeer.com)

# We've been expecting you.

Ready to be recognized as a Premier client around the world?

Local and global recognition. Dedicated Relationship Manager. Seamless global banking.

Start a Premier relationship today.

[us.hsbc.com](http://us.hsbc.com) 1-800-975-HSBC

HSBC  PREMIER

**Patchogue Office**  
325 E. Main St.  
Patchogue, NY 11772  
631-475-2600

**Bellport Office**  
20 Station Road  
Bellport, NY 11713  
631-286-3800

**Mastic Office**  
1718 Montauk Hwy.  
Mastic, NY 11950  
631-281-6400

Deposit products in the United States offered by HSBC Bank USA, N.A. or HSBC National Bank USA. Both are Member FDIC. ©2007 HSBC Bank USA, N.A.



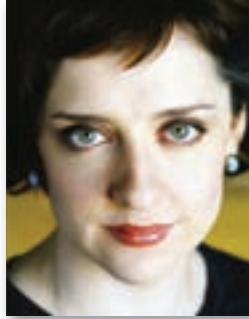
ERIN CROSBY



DAVID EDWARDS



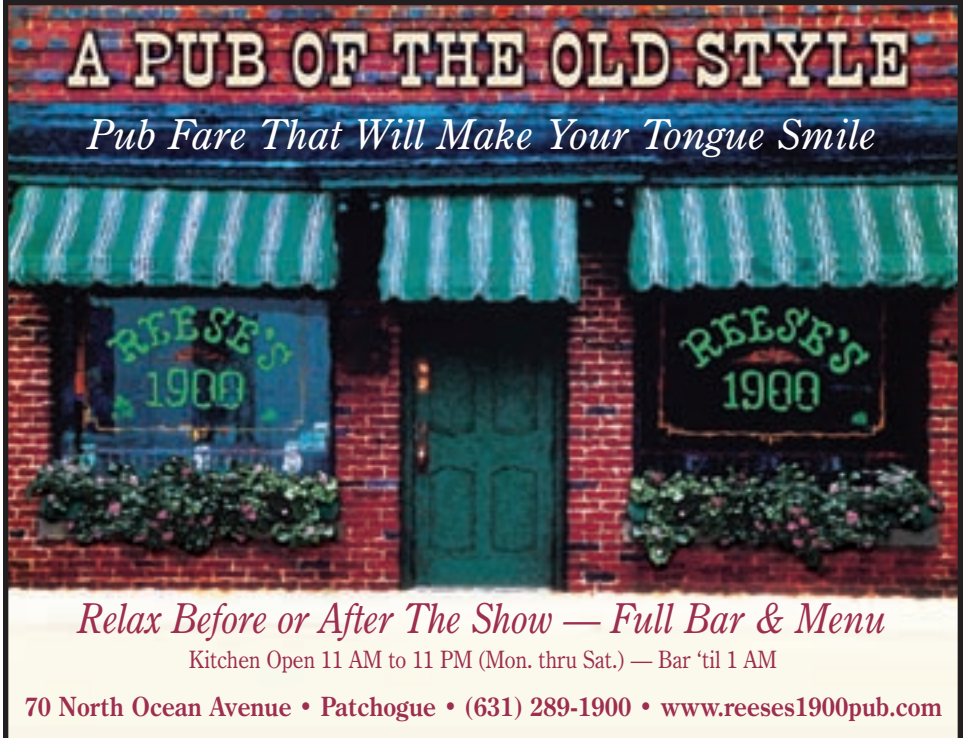
JOY LYNN MATTHEWS



KRISTEN MENGELKOCH



KATHERINE PECEVICH



**A PUB OF THE OLD STYLE**  
*Pub Fare That Will Make Your Tongue Smile*

REESE'S 1900

*Relax Before or After The Show — Full Bar & Menu*  
Kitchen Open 11 AM to 11 PM (Mon. thru Sat.) — Bar 'til 1 AM

70 North Ocean Avenue • Patchogue • (631) 289-1900 • [www.reeses1900pub.com](http://www.reeses1900pub.com)

The advertisement features a brick building facade with a central green door and two windows. Each window has a green and white striped awning and a sign that reads "REESE'S 1900". The text is presented in a mix of bold, serif, and italicized fonts.

ROLEX, BAUME & MERCIER,  
HEARTS ON FIRE, EBEL,  
CASATO, SWATCH, TISSOT  
FINE WATCHES & JEWELRY

JEWELRY, WATCH &  
AUTHORIZED ROLEX REPAIRS  
DONE ON PREMISES

APPRAISALS, CUSTOM DESIGN,  
WE PURCHASE GOLD

GIFT CARDS AVAILABLE,  
FINANCING AND ALL MAJOR  
CREDIT CARDS ACCEPTED

CONTACT US FOR MORE INFO AT:  
ROSEJEWELERS@HAMPTONS.COM



**SOUTHAMPTON**

57 MAIN STREET  
(631) 283-5757  
PATCHOGUE

74 E. MAIN STREET  
(631) 475-1441

WWW.ROSEJEWELERS.NET



WE OFFER A FULL SELECTION OF

**PANDORA™**



# South Country Inn

*Fine Italian and Continental Cuisine*

*A short drive from both theatres  
on South Country Road.*

Special packages for parties &  
theatre groups.

Open Tuesday - Sunday, Noon-10p.m.  
Reservations recommended

**Moderately Priced Entrees**

**Prix Fixe Dinners - 3-6 PM Tues-Sun - \$22.95**

**Daily Lunch Specials - Tuesday-Sunday**

668 South Country Rd., East Patchogue

**758-1919**



[www.SouthCountryInnRestaurant.com](http://www.SouthCountryInnRestaurant.com)



**Complimentary  
Glass of Wine**

OR

**\$10 Off Any  
Dinner Check Over \$80**

with your lunch or dinner when you present  
show tickets or this ad. Not to be combined.

When you present your show tickets or this ad. 1 coupon per couple.  
Not to be combined. Not valid on Holidays. Expires 10/17/09.

# MUSICAL NUMBERS

## ACT I

Prologue-Extra! Extra! .....	The Four Nuns & Howard
Anchors Aweigh.....	The Four Nuns & Howard
Contrition (A Song of Guilt) .....	The Four Nuns & Howard
Sister Amnesia’s Magic Moments .....	Sister Amnesia
Say it in Yiddish .....	Howard and Reverend Mother
Tevey and Rev .....	Sisters Robert Anne and Hubert
My Ship .....	Sister Amnesia with Sisters Robert Anne and Hubert
The Potchky Polka .....	Howard, Sisters Robert Anne, Amnesia & Hubert
Howard’s Monologue.....	Howard
My Fat is My Fortune .....	Reverend Mother with Three Nuns & Howard
Hava Nagila.....	Sister Amnesia
Das Boat.....	The Four Nuns & Howard

## — INTERMISSION —

## ACT II

Opening Act Two-Reprise: Extra! Extra!.....	The Four Nuns & Howard
A Love Like This .....	Sister Robert Anne & Howard
Reprise: Say it in Yiddish .....	The Four Nuns & Howard
If I Were a Catholic.....	Howard & The Four Nuns
Three Shayna Maidels.....	Sisters Hubert, Robert Anne & Amnesia
Dialogue: Duty Free Shopping .....	Reverend Mother & Howard
Matzo Man .....	The Four Nuns & Howard
Fiddlerspiel .....	The Four Nuns, Howard & Audience
Come Up and See Me Sometime.....	Sister Mary Annette (Sister Amnesia) & Howard (Mae’s Moment)
I’ll Find a Song to Sing .....	Sister Robert Anne
Rock the Boat.....	Sister Hubert with Three Nuns & Howard
Finale-Reprise: Anchors Aweigh .....	The Four Nuns & Howard

---

**WARNING** – The photographing or sound recording of any performance is strictly prohibited. Gateway Playhouse offers a wireless sound enhancement system for the hearing impaired. Inquire at the box office for more information.

**FIRE NOTICE** — The exit indicated by a red light and sign nearest to the seat you occupy, is the shortest route to the outside. In the event of fire or other emergency, please do NOT run. WALK to that Exit. However, under normal circumstances, when leaving the Theatre, use the center rear exits. SMOKING is prohibited in the BUILDING, as required by the Suffolk County NO SMOKING Ordinance. Smoking in any area designated “No Smoking” renders the offenders subject to a fine, or imprisonment, or both.

Stop in today  
and visit these

# Bellport Shops



## EXPLORER OF THE SEAS®

SAILING YEAR ROUND FROM  
CAPE LIBERTY, BAYONNE, NEW JERSEY

For more information contact your Royal Caribbean Experts!

### Bay Travel & Tours

440 South Country Road • East Patchogue, NY 11772  
www.baytravelandtours.com • info@baytravelandtours.com

**631-447-6440**

\*All itineraries are current at the time of printing and subject to change without notice. Certain restrictions apply. ©2008 Royal Caribbean Ltd. Ships registry: The Bahamas. 08011591 • 05/07/2008



**Present this ad  
for on-board credit  
with any new  
Royal Caribbean  
Booking for 2009**



## South Shore Wines & Liquors

- Weekly Wine Tastings
- Special Orders
- 10% Off Case Purchases

Email for our  
Wine Tasting of the Week  
southshorewine@gmail.com

440A South Country Rd.  
East Patchogue

**(631) BUY-WINE**  
2 8 9 - 9 4 6 3

## MVP Automotive

Service Center

HONEST PROFESSIONAL SERVICE



Foreign  
&  
Domestic

24 Hour Towing

152 South Country Road  
Bellport Village, NY 11713  
Phone: (631) 776-1010

[www.mvpautomotive.com](http://www.mvpautomotive.com)

**10% OFF Service with this Ad**

# Swan Bakery

All Occasion Cakes

Guy Gagliano

The Official Bakery of Gateway Playhouse

15 South Country Rd., East Patchogue, NY 11772  
(631) 475-9626

**ERIN CROSBY** (*Sister Robert Anne*) is so excited to return to Gateway after making her Gateway debut last season in *Forbidden Broadway*. Erin was last seen Off-Broadway in *Forbidden Broadway: The Roast of Utopia* (47th Street Theater), *Shout! The Mod Musical* (Yellow Girl, Original Cast at the Julia Miles Theater), *Forbidden Broadway: SVU* (47th Street Theater and The Douglas Fairbanks Theater). Erin also recorded the original cast album of *Shout!* (Rhino Records). Other credits include: *The Rink* (Illinois Theater Center), *Meet Me in St. Louis* (Illinois Theater Center), *Anne and Gilbert* (York Theater), *Snow the Musical* (ASCAP), *Bring me a Dwarf* (The Players Theater), and *Roadkill* (The Triad), *Shout! The Mod Musical* (The Duplex, AMAS, and The Lambs Theater). Erin is a member of Actor's Equity. She has had appearances on "Good Morning America", "A&E Breakfast with the Arts", the WB11 "Morning Show" and "The Jerry Lewis Telethon". Much love to Hunter!

**DAVID EDWARDS** (Director/Choreographer/Howard Liszt) Broadway: *By Jeeves*, *The Rothschilds*. National Tour: *The Producers*. Off-Broadway: final "El Gallo"

in the original run of *The Fantasticks* and recently starred in the critically acclaimed revival of *Room Service*. Other NYC credits include *The Disputation*, *Dr. Sex*, *The Roar of the Greasepaint...*, *That's Life*, *Jolson & Co.*, *What's A Nice Country Like You Doing In A State Like This?*, *Zion, Company*, and *Bittersuite* (cast recording). At Gateway Playhouse: *La Cage Aux Folles* (Albin), *Beauty and the Beast* (Lumiere), *The Producers* (Roger DeBris). Regional roles include *Man of La Mancha* (Don Quixote), *Bells Are Ringing* (Jeff Moss), *A Little Night Music* (Fredrick), *Camelot* (King Arthur), *1776* (John Adams), *Little Me* (Star Ledger Award Best Actor), *Driving Miss Daisy* (Boolie) and *A Few Good Men* (Jessup) at such theatres as Ordway, Portland Stage, Eugene O'Neill Center, Westchester Broadway, Old Globe, GeVa, and Syracuse Stage. Film: *Belly*, *The Fantasticks: Try To Remember*. TV: "Eternal Light". Directing credits include the world premiere of *The Balancer* and regional productions of *The Producers* (WBT), *By Jeeves* (Meadow Brook), *South Pacific*, *Rumors*, and *Showboat* (Surflight). [www.davidedwardsonline.com](http://www.davidedwardsonline.com)



*"I pride myself in providing the best quality dental care at affordable fees."*

**Complete Family & Cosmetic Dentistry**

## Shawn P. Shannon

DMD

- Friendly, Gentle, One Dentist Practice
- Your dental needs and concerns are handled with the care you will appreciate.
  - New Patients Welcome

285 Sills Road, Bldg. 15F  
East Patchogue • Brookhaven Professional Park

**654-1040**

For appointments or questions, ask for Ginger

*Thanks to all our Patients who have referred Family & Friends*

Call to see if we take your insurance  
Sorry, Medicaid not accepted

# CAVANAUGH'S

"Let's Have Fun" Est. 1986

**Lunch Served**  
Tuesday - Sunday, Starting at 11:30 a.m.

**Late Night Dining**  
Kitchen Open Till 11 p.m., Tuesday - Sunday

Open 6 Days - Tuesday-Sunday  
11:30 a.m.-2 a.m.

**your neighborhood  
restaurant & pub**

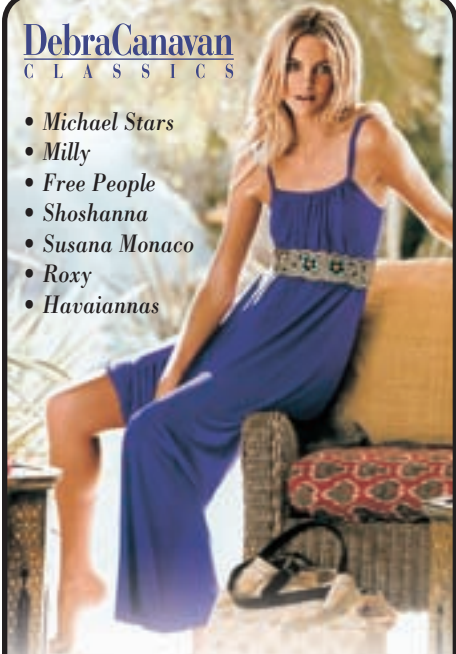
L.I.E.



[www.cavanaughhsbluepoint.com](http://www.cavanaughhsbluepoint.com)  
255 Blue Point Avenue, Blue Point  
**631-363-2666**

**DebraCanavan**  
CLASSICS

- Michael Stars
- Milly
- Free People
- Shoshanna
- Susana Monaco
- Roxy
- Havaianas



*Casual, Career & Cocktail*

53 Main Street, Sayville – 631.563.9385



**MONTI'S**  
**AUTO WORKS**

*It's in the Details*

Expert Auto Collision Repairs  
All Insurance Accepted

1791 Montauk Highway  
Bellport, NY 11713

**286-2116**

## Theatre Special - 10% OFF Dinner

### For The Good Times!

Enjoy the warm, welcoming atmosphere and fine food at the BrickHouse Brewery & Restaurant and **SAVE 10% OFF your entire dinner bill.**

Just present your tickets for before dinner dining, or your stub for after dinner dining, and receive 10% Savings.

10% savings valid 2 hours prior or after show date and time at the Gateway Playhouse or Patchogue Theatre. Cannot be combined with any other discount offer. Valid for lunch or dinner.



Open Daily 11 AM

67 W. Main St., Patchogue (631) 447-2337 • (631) 447-BEER

[www.brickhousebrewery.com](http://www.brickhousebrewery.com)



**KRISTEN MENGELKOCH** (*Sister Amnesia*)'s smiling ear-to-Catholic-ear to be back at Gateway after performing *Forbidden Broadway* here last summer. She has performed Off-Broadway & on tour with recent editions of *Forbidden*...Other credits include *The Most Happy Fella*, *Pete 'n' Keely*, *The Nerd & Nonsense*. As a founding member of Southern Colorado Repertory Theatre, she appeared in *The Last Five Years* & *Sylvia*. Television: *Veronica Mars* (Co-Star). Kristen has a MFA in musical theatre from San Diego State University & a BFA from Emporia State University in Kansas. Thanks to Robin, Paul & Michael for welcoming me back...Love to Jonathan. [www.kristenmengelkoch.com](http://www.kristenmengelkoch.com)

**JOY LYNN MATTHEWS** (*Sister Hubert*) Delighted to debut here on the Gateway Playhouse stage! Recent credits include- Broadway: *The Music Man*; *Marie Christine*. First national Broadway tours: *Ragtime*, *Showboat*. Off-Broadway: *Madame Wu-Chan*(s/b) *Our Leading Lady*, *Delia- Asylum- The Strange Case of Mary Lincoln*; *Power Woman- Menopause the Musical* (original N.Y. cast). Regional:

*Muzzy - Thoroughly Modern Millie*, *Wanda- Crowns*, *Reno Sweeney - Anything Goes*, *Lady Thiang - The King & I*, *Aldonza - Man of La Mancha*, *Joyce Heth - Barnum*. Opera: *Mercedes - Carmen*. Film: *Menace II Society*. And six years as Guest Entertainer for Princess Cruises.

**KATHERINE PECEVICH** (*Reverend Mother*) is a Massachusetts native and a musical theatre graduate of The Boston Conservatory. Recent credits include the 30<sup>th</sup> Anniversary National Tour of *Annie* as well as the newly released cast album, "Scrooge In Rouge" and "The Kathy and Mo Show". Katherine would like to thank Gateway Playhouse for this wonderful opportunity and her friends and family for their continued support.

**DAVID EDWARDS** (*Director/Choreographer/Howard Liszt*) see actor bio.

**BRENDAN WHITING** (*Musical Director*) a native of Kamloops, British Columbia, Canada, Brendan has found a home away from home here at

# Swezey

FUEL CO., INC. - EST. 1919

## Suffolk's Largest Family Owned Oil Company

- Automatic Oil Delivery Service
- 24-Hour Emergency Service
- Budget Plans That Pay You Interest
- Expert Installation Of Boilers, Burners, Hot Water Heaters & Pool Heaters



# 475-0270

51 RIDER AVE., PATCHOGUE

## DOMINICAN SISTERS FAMILY HEALTH SERVICE

...a healing presence serving  
Suffolk County for over 45 years.

### CERTIFIED NON-PROFIT HOME HEALTH CARE SERVICES

Skilled Nurses & Home Health Aides  
Physical, Speech & Occupational Therapies  
Social Work & Pastoral Counseling  
Long Term Home Health Care  
HIV/Aids Care Programs

Call us at our offices

Medford: 631.736.1527

Hampton Bays: 631.728.0181

Wainscott: 631.537.6759

[www.dsfs.org](http://www.dsfs.org)

We accept Medicare, Medicaid & most private health & managed care insurance

Gateway Playhouse. He has been assistant music director for the past three seasons, and recently conducted *Sophisticated Ladies*. Some Gateway favorites include *Thoroughly Modern Millie*, *Dreamgirls*, *The Producers*, and *Sweet Charity*. Other credits: *Seussical* (Western Canada Theatre), *An Evening With Alan Menken* (Lincoln Center) and *Roller Derby: the musical* (NYMF). Many thanks to Paul and Robin.

Official Winery of Gateway Playhouse



## Duck Walk Vineyards

231 Montauk Hwy. • Water Mill • NY - (631) 726-7555  
44535 Main Road • Southold • NY - (631) 765-3500

[www.duckwalk.com](http://www.duckwalk.com)

**OPEN 7 DAYS • 11 am - 6 pm**  
Wine Tastings and Tours

 Applebee's

Proudly Supports  
**Gateway  
Playhouse**



**PATCHOGUE**  
Sunrise Highway  
(Route 27)  
& Waverly Ave  
631-207-5900

**You Call It In. We Bring It Out.™**

Available at select locations.

**It's a whole new neighborhood.™**

**BARRY AXTELL** (*Scenic Designer*) has designed almost every major production all over North America of *Nunsense*, *Nunsense II*, *Nunsense Jamboree*, *Nunsense A-Men*, *Nuncrackers*, and *Meshugahh-Nuns!* He has been a designer in NY for over 20 years designing sets for over 200 productions all around the world. Barry has been set designer for 12 years on the long running drama "Guiding Light" for which he received 3 Emmy nominations. He has also designed the 20<sup>th</sup> anniversary all-star tour of *Nunsense* and most recently he created the "pump-room" for *Nunsensations*.

**KIM HANSON** (*Lighting Designer*) has been designing lights for Gateway Playhouse since 1985. During that time he also designed lighting for many National & International tours. His work was first viewed in Asia with the tour of *42nd Street* with stops in Israel, Singapore and Hong Kong. He revisited those wonderful venues and added KL to his passport as Lighting Director for the Rodgers and Hammerstein revue *Some Enchanted Evening*. His first visit to Taiwan came when he

## Beach House Restaurant



Lunch & Dinner - Indoor/Outdoor  
363 Grove Ave. Patchogue 631-758-3524  
(closed Mondays)



## Lawntasia

LANDSCAPE SERVICES

Design • Patios • Ponds

Roger May

PO Box 652 • Bellport, NY 11713  
631.286.0941 • [www.lawntasia.com](http://www.lawntasia.com)

Stage Managed the tour on *Hello Dolly*. Additional international design credits include tours of *My Fair Lady*, *Aladdin*, *Man of La Mancha*, *Song and Dance*, *Evita* and of course, *A Chorus Line*. Kim has designed and managed many galas and special events in New York City where he enjoyed providing designs for stars such as Tommy Tune, Gregory Hines, Ray Charles, Barbara Cook, and Harry Belafonte. Prolific in the dance world, Kim has designed star tours for Robert LaFosse, Darci Kistler, Jacques Sotot, Allegra Kent, Gary Chryst and many others. As resident lighting designer for NYC's New American Ballet Ensemble he had the privilege of designing the world premiere of Ben Harkarvey's *Premonition*. Before moving to Connecticut, Kim was the long time resident lighting designer for the avante garde modern dance company Chen and Dancers based in New York City's Chinatown.

**PATRICIA MASON** (*Production Stage Manager*) is excited to be back for her second season at Gateway to celebrate the 60th Anniversary. Patti was Assistant Stage Manager last season for *Will*

*Rogers Follies*, *Beauty and The Beast*, *The Producers*, *The Wedding Singer* and *Christmas Spectacular: A Century of Christmas*. Most recently she was Stage Manager for *Homeward Bound*, a new play produced by Greenlight Productions in New York City. Her favorite past shows include *The Wedding Singer* at Gateway Playhouse, *I Am My Own Wife* and *Chick*, *The Great Osram* at Hartford Stage Company, and *Godspell* at The Walnut Street Theatre. Endless love and thanks to her family.

**RICHARD B. MILLER**  
Assistant Branch Manager  
First Vice President  
Investment Officer



**ROBERT A. NOGRADY**  
Branch Manager  
Senior Vice President  
Investment Officer

## WACHOVIA SECURITIES

Wachovia Securities, LLC  
500 West Main Street • Suite 105 • Babylon, NY 11702  
Tel 631 661-1600 Fax 631 661-0099 Toll Free 877 613-1600  
richard.miller@wachoviasec.com • robert.nogrady@wachoviasec.com

## RELEVÉ DANCE CENTRE

*Where everyone is a Star*



- Acro
- Break Dance
- Ballet/Pointe
- Hip-Hop
- Jazz (Funk & Cont.)
- Lyrical
- Pre-School Programs
- Kindergarten
- PreJazz/Tap 1st grade
- Tap (Rhythm & Trad.)

AM & PM CLASSES  
Birthday Parties  
Tumble Buddies (Mommy & Me)  
Family Discounts  
**FREE TRIAL CLASS**

889 Montauk Hwy., Bayport, NY  
**631.472.9322**  
www.relevedance.com

*Professional training in a nurturing environment*



Norman Orsinger Woodworking Ltd.  
258 West Woodside Ave.  
Patchogue, N.Y. 11772  
631.289.0846 - Showroom  
516.449.0986 - Cell

*The finest in custom furniture,  
cabinets, and millwork.  
For more information visit our  
website or call us today!*

www.NormanOrsingerWoodworking.com

**ROBIN JOY ALLAN** (*Casting and Artistic Director*) has been the Casting Director at Gateway for the last fifteen years. This will mark her seventh year as Artistic Director. Robin spent most of her early life performing, directing, musical directing, writing and teaching drama. She then became involved in Casting, spending several years in Manhattan and Los Angeles working in Film and Television. You'll find her name on: *Parenthood, When Harry Met Sally, Lord of the Flies, Side Out, Ghost, Witness to the Execution, Cutters*, along with many other projects, more obscure. She was directly involved in starting the careers of several of today's celebrities. Along with her Artistic and Casting Director duties, she is the force behind Gateway's Acting School Division, where she teaches the advanced classes, and directs the Manhattan Showcase for the school's competitive students. Her daughter Hayley, now twelve, is her joy. She continues to give her heartfelt effort to the evolution and success of her family's legacy that is Gateway Playhouse.

**PAUL ALLAN** (*Producer*) As Gateway celebrates it's 60th season, Paul sits in what was once

his grandfathers of ce and reflects on this monumental achievement. Gateway has always been a family business, and each era has brought significant challenges particularly in the 80's and 90's when shows became more complicated and technically challenging. Additionally, the grounds changed, the buildings were modernized, and the facilities updated. In the most recent decade, the caliber of the artistic staff, performers, musicians, and technicians has risen to a level equaling and sometimes surpassing many Broadway shows. It has been dif cult for Paul to find time to do other projects outside of Gateway seasons, but over the years he has been able to work on several NY shows in different capacities, as well as run a touring company with shows traveling around the country and abroad, operate a sister theatre in Connecticut, and maintain a set rental business - where Gateway scenery is used in theatres across the country after appearing on the Gateway stage. Paul appreciates, admires, and honors his family's dedication to the arts and is proud to help continue the legacy.■

## Richard York

OF PATCHOGUE



631-475-1047  
14 South Ocean Ave.  
Patchogue

From Patchogue Theatre  
entrance, 1 block west  
and four stores south

### Quality Footwear for the Entire Family Since 1927

- Friendly, Caring & Knowledgeable Service
- Areas Largest Selection of Sizes & Widths AA-EEEEEE

Rockport, Easy Spirit, Florsheim, New Balance, Stride Rite, Teva, Timberland, Skechers, Ros Hommerson, Hoffer, Keds, Reebok, Dyeables, Topsider, Soft Spots, Clarks, Naturalizer, Hush Puppies, Daniel Green, Foamtreads, Toe Warmer Boots, etc.

**10% OFF** any purchase with ad only

Excludes Easy Spirit, Dr. Martens & other offers. Expires 12/31/09

## ROE AGENCY INC.

### Insurance Since 1898

*Personal & Commercial  
Life & Health*

- \* Homeowners \* Automobile \*
- \* Flood \* Boat \* Umbrella \*
- \* Commercial Property \*
- \* Liability \* Business Auto \*

### All Forms of Insurance

◆ 125 East Main Street ◆  
◆ Patchogue, New York 11772 ◆  
Phone: 631.475.4000  
Fax: 631.475.7648

# Pamela Lerner ANTIQUES

*Pam and Kate  
invite you...*

In honor of your  
patronage of the arts,  
*to a complimentary  
glass of wine\**  
at the legendary  
*Bellport  
Country Club.*

Experience unique  
Bellport Village and visit  
Pamela Lerner Antiques  
to pick up your gift card.

\*Complimentary glass of wine  
with purchase of lunch or dinner.  
Gift card must be presented.



145 South Country Road Bellport, New York 11713 PAMELALERNERANTIQUES.COM 631.776.2183

**LARGE STEAKS  
LOW PRICES  
BIG VALUE**



**CHOSEN #1 STEAKHOUSE  
IN SUFFOLK COUNTY**

FOR BEST BEEF FOR THE BUCK BY **NEWSDAY**  
4/16/09 PART 2 - "DEALS THAT SIZZLE"

**MORE THAN  
15 MEALS  
FOR UNDER \$15**

**OVER JUST  
25 LUNCHES \$8.99**

INCL.: SOUP OR SALAD & 2 SIDES

**SENIOR CITIZENS DAY  
(ALL DAY TUESDAY)**

INCLUDES SOUP OR SALAD,  
ENTREE, DESSERT,  
COFFEE OR TEA.

**FROM \$12.99**

**EARLY BIRD ITEMS  
MON.-FRI STARTS AT \$12.99  
3-7 PM**

**BLACK BOARD  
SPECIALS DAILY**

**KIDS EAT FREE SUN-THURS**  
ONE WITH EACH FULL PAYING ADULT

**WWW.JANDRSSTEAKHOUSE.COM**

**CALVERTON  
727-7218**

**ROCKY POINT  
744-2101**

**PATCHOGUE  
475-9200**

**MEDFORD  
475-3839**

**STONY BROOK  
689-5920**

**COMING TO  
ISLIP  
IN JUNE**

# Avino's italian table



Bellport's New Eating Experience!

108 South Country Road, Bellport Village  
Phone: 631-803-6416 Fax: 631-803-6418

*Gateway Playhouse extends its gratitude to the following local restaurants and shops for helping us celebrate our 60 years by participating in the 'gift certificate/coupon book to subscribers' promotion:*

*Avino's Italian Table, Painters' Restaurant, South Country Inn, Porters on the Lane, Meritage Trattoria, Chachama Grill, Papa Nicks, Pura Vida, La Margherita, Sicilia D'Oro, Brick House Brewery, The Oar Restaurant, The Ground Round, Bobbique, Bellport Jewelers, Summer Salt Beach House, Variety Mart, Circa Something Antiques, Pamela Lerner & Kate Carmel Antiques, Village Paint, Bellport Arts and Framing Studio, and Carla Marla's.*



★ ★  
**Summer  
Classes Enrolling  
Now.**

## ACTING AND MUSICAL THEATRE TRAINING

all levels of acting for all ages thru adult



## GATEWAY ACTING SCHOOL

LEARN FROM THE PROFESSIONALS!

**286-9014**

### Want A "Spa Massage" Without The Spa Prices?

Call Fasulo Chiropractic and experience therapeutic massages at reasonable prices.



Embrace Life Holistically

"The most relaxing massage I ever had!"  
L.S., Westhampton Beach

Dr. JoAnna Fasulo - Chiropractor and Applied Kinesiologist  
Eileen Valenti & Frank Dallaire: NYS Licensed Massage Therapist

631-289-3939 • 680-C Route 112, Patchogue, NY 11772  
(next door to The Pita House)

— Voted Best Chiropractor on Long Island by Long Island Press 2007, 2008, 2009 —

**Mention this ad and receive \$10 off a Full Hour Massage**

# Dan Goggin – Theater is a Habit for

By Jennett Meriden Russell

For the past quarter century, Dan Goggin has established himself as the deacon of parochial parodies with his musical-comedy series *Nonsense*, which follows the nonsensical adventures of a congregation of fictional Catholic nuns.

The 66-year-old Michigan native began his professional career singing in the 1963 Broadway production of “Luther” starring Albert Finney. While appearing in a comic folk-duo called “The Saxons” he began to dabble with musical theater writing.

He eventually penned the score for the 1972 off-Broadway musical, “Hark!” in which he also appeared. In the late 1970s, Mr. Goggin received a store mannequin dressed in full nun’s habit as a joke from a friend, who was a Dominican brother. Mr. Goggin nicknamed the plastic preacher “Sister Mary Mannequin.”

He and some friends developed a successful line of greeting cards featuring the silent sister. Shortly after, the story of the “Little Sisters of

Hoboken” emerged, complete with songs and sketches, and *Nonsense* was born.

Mr. Goggin wrote and directed the original off-Broadway production of *Nonsense*, which opened in 1985. It ran for 3,672 performances, becoming the second-longest running show in off-Broadway history.

The *Nonsense* series, which now totals eight chapters, has become an international phenomenon that has been translated into at least 26 languages. Mr. Goggin and *Nonsense* received the 1986 Outer Critics’ Circle Award for Best Musical, Best Book, and Best Music.

Gateway chatted with Mr. Goggin about *Nonsense* and its origins.

**Gateway Playhouse:** “We understand that Sister Mary Mannequin, the store model that inspired *Nonsense* has since retired. Is Sister Mary Annette, the famous *Nonsense* puppet, Sister Mary Mannequin reincarnated?”



**Dan Goggin:** "Actually the puppet came to life just because we wanted another character but couldn't afford one. The thing we discovered was that the puppet could be truly rude and horrifying and we could get away with it."

**GP:** "And the joke is that nobody acknowledges that the puppet is not a real person."

**DG:** "Right, we just play her like she's real. She even gets mail and phone calls. We had some actual nuns come to see the show and someone asked one of the sisters 'weren't you offended by Sister Amnesia said with that puppet?' and the sister said 'well, it wasn't her fault - it was the puppet.'"

**GP:** "So, have any nuns ever been offended by the show?"

**DG:** "Are you kidding? They're our best laughers."

**GP:** "In *Meshuggah-Nuns*, you introduce a male character into the cast. But that isn't the first time men have appeared in *Nonsense* shows."

**DG:** "For years, male actors kept saying, 'let us do the show,' but I was very concerned that people would be offended. So, finally an all-male version of *Nonsense* was done in Brazil and it was a big hit. So, we said, 'alright, let's try it in New York.' The seventh show is really the 6-1/2 show of the original, but its done with all guys and we called it *Nonsense A-Men*. People loved it and we even

had Olympic diving champion Greg Louganis once play Sister Robert Anne."

**GP:** "We understand that the characters for *Nonsense* are based on actual sisters you encountered while attending St. Mary's parochial school in Alma, Michigan?"

**DG:** "They were sisters who taught me. Even Sister Amnesia was this wacky nun I had in the third grade, who we found out later lived in this crazy fantasy world and told these ridiculous stories that we all believed."

**GP:** "Are any of those sisters still alive and have they seen any of the shows?"

**DG:** "Three of them are still alive and they consider themselves huge stars."

**GP:** "So, they're not offended about being the inspirations of the *Nonsense* characters?"

**DG:** "They're flattered. I think it's because none of the shows really have anything to do with religion. Even with *Meshuggah-Nuns*, it's about one group of people meeting another group of people in a zany situation. The shows are never preachy about anything to do with religion. Nuns always tell me they love the idea that people see them in their competitiveness, and having fun, and kicking up their heels - it shows that even nuns have a human side." ■



HTM  
LANDSCAPING

is the official landscaper of

*Gateway Playhouse*  
all work done by owner  
Nicholas J. Harding

**631-475-0636**

**Bellport Country Club**  
3-course prix fixe Dinner - \$24.95  
Tuesday - Sunday

Reservations recommended

**[www.bellportcountryclub.com](http://www.bellportcountryclub.com)**  
**286-4227**



**40 South Country Road, Bellport**

*Welcome Aboard*

**S.S. GOLDEN DELICIOUS**  
***"Apple of the Eden Line"***

**FAITHS OF ALL  
NATIONS  
WORLD CRUISE**

*Fiddlerspiel Chorus*

The fiddler on the roof  
Plays his simple song  
To remind us life is fragile  
And it doesn't last long.

The fiddler on the roof  
In his simple way is saying  
Cherish every moment  
Of every single day.



## Yiddish

- Bar Mitzvah**— Coming of age ceremony  
**Bei Mir Bist Du Shane**— To me you are beautiful  
**Bialy**— Flat, crusty roll  
**Boruch**— Bless You  
**Bris**— Ceremony of circumcision  
**Chutzpah**— Nerve  
**Dreidel**— A child's spinning top  
**Ferklemp**— Beside oneself  
**Goyem**— Non-Jewish people  
**Hava Nagila**— Traditional Jewish tune  
**Kvell**— To take extreme pride  
**Matzo**— A flat cracker used for Passover  
**Mazeltov**— Congratulations  
**Meshuggah**— Crazy  
**Oy, rachmones**— An expression of Sympathy  
**Plotz**— Have a fit  
**Seder**— Passover meal

- Shalom**— Peace be with you  
**Yeshiva**— Jewish School  
**Yisgadal V'yiskadash**— May God be great

## Catholic

- Adoramus te**— We adore Thee  
**Ave Maria**— Hail Mary  
**Benedicta tu**— Bless you  
**Blessed Virgin Mary**— Clear sky blue  
**Credo in unum Deum**— I believe in one God  
**Dominus Vobiscum**— The lord be with you  
**Kyrie**— Lord  
**Sanctus Dominus Deus**— Holy, Lord God

## Portuguese

- Eu mato aquela cachorra**—  
 I'm going to #%#\*&\*\$!

*Your Safe,  
 Solid, Secure  
 Financial Partner*  
 Since 1890



**SUFFOLK COUNTY  
 NATIONAL BANK**

*Twenty-nine branch locations  
 throughout Suffolk County.*

Visit us on the web at  
[www.scnb.com](http://www.scnb.com)

Member FDIC Equal Opportunity Lender



**STAGE DOOR**  
 School of Dance

**Summer Classes**  
 now forming



- State-of-the-Art Studio
- Ballet, Tap, Jazz, Hip Hop, Modern
- Weekly Character Dance Camps

655-19 Montauk Hwy • East Patchogue NY  
 (Just west of McDonald's)

Call now for class schedule  
**631.654.8858**  
[www.stagedoordancer.com](http://www.stagedoordancer.com)

# GATEWAY PLAYHOUSE STAFF

## ADMINISTRATIVE

Executive Producer .....	Ruth Allan
Producer.....	Paul Allan
Associate Producer .....	Jeff Bellante
General Manager .....	Gale Edwards
Company Manager.....	Michael Baker
Assistant Company Manager .....	Stefan Schuette
Assistant to the Producer .....	Kevin Schaefer
Administrative Assistant/Intern .....	Sarah Innes
Musical Contractor .....	Jeff Hoffman

## ARTISTIC

Artistic/Casting Director .....	Robin Joy Allan
Director/Choreographer.....	David Edwards
Musical Director .....	Brendan Whiting
Lighting Designer.....	Kim Hanson
Scenic Designer .....	Barry Axtell
Scenic Coordinator .....	Brittany Loesch
Resident Sound Designer .....	Cody Spencer
Assistant to the Artistic/Casting Director.....	Jessica Harrison
Production Photographer.....	Jeff Bellante

## BOX OFFICE

Box Office Manager .....	Laurie Parr
Director of Group Sales.....	Annmarie Allan
Group Sales .....	Claire Ward
House Manager.....	Joanne Famiglietti
Box Office Staff.....	Diane Koerber, Nadine Hazard, Christina Montalto, Linda Unger, Francesca Welhous

## PRODUCTION

Production Manager .....	Brian Loesch
Production Stage Manager .....	Patricia Mason
Wardrobe Supervisor .....	Marianne Dominy
Scenic Coordinator .....	Brittany Loesch
Technical Director.....	AD Garrett
Master Electrician.....	Kurt Krohne
Sound Engineer.....	Shane Bourgeois
Assistant Master Electrician.....	Justin Hoffman
Shop Foreman .....	Mark Frederick
Wardrobe Assistants.....	Jessica Spota, Rachael Ralby
General Technicians .....	Matt Anastasio , Courtenay Drakos, AJ Lebenns, Keith Reilly
Sound Consultant.....	Domonic Sack
Production Management Intern.....	Jon Dykstra
Stage Management Interns.....	Ashley Bigge, Matthew Montville
Electric Interns.....	Colin Chauche, Avi Meck
General Technician Interns .....	Robert Bursztyn, Jacob Forstein, Zac Kollegger, Peter J. Trawinski
Wardrobe Interns .....	Allen Davidson, Stephen Szymanski

## FACILITIES

Facilities Manager .....	The Don Harrison
Concessions Manager.....	Carl DeMasi
Cleaning Staff.....	Felix Bonilla, Christopher Washington
Facilities Apprentice .....	Brendan T. Smith
Grounds Maintenance .....	HTM Landscaping Company
House Staff.....	Eric Burt, Ryan Hudak, Martin Maningo, Lauren Parr, Raymond Tobia, Edward Wecera
General Counsel .....	Ann L. Nowak & Associates

## A Notice About Parking

We strongly encourage our patrons to always park on Gateway grounds. Parking is not allowed on Maplewood Drive north of the back Gateway exit. Parking is also prohibited on the east side of the street (Gateway side). Observe the No Parking signs.

The Village of Bellport has advised us that cars parked in these areas will be ticketed. Please park on the west side of the street, opposite the Gateway fence, between the back exit and South Country Road.

We appreciate your cooperation in making your visit to Gateway as pleasant as possible.

## Gateway Playhouse would like to thank our volunteer staff for their dedication and support. It is much appreciated.

Marie Rachek – Head Usher

Missy Atchue, Carmela Aiosa, Olga Belz, Betty Entress, Joyce Gambino, Linda Good, Marian Harrison, Peter Haustein, Jean Khabo, Mary Lanier, Connie Merced, Sue Nemet, Peter Pernice, Linda Randolph, Sandy Reifel, Allan Ritchie, Terry Seng, Alexis Sheridan, Raymond Tobia, Mary Wirth

**IF YOU WOULD LIKE TO JOIN OUR VOLUNTEER STAFF CALL 286-0555**

# The Risk Lies in Doing Nothing.

If the phones aren't ringing like they used to, now is the time to be proactive with self-promotion. We apply focused technical knowledge to accomplish measurable objectives with a creative approach. Let us customize a plan that will give you a comprehensive presence in your industry, within your budget.



56 Old Dock Road  
Yaphank NY

t 631.345.2202  
f 631.345.0975

searlesgraphics.com

website  
DEVELOPMENT

graphic  
DESIGN

commercial  
PRINTING

Support Gateway Playhouse and the Local Community...

*There is still time to get your advertisement in this Playbill. With four shows to go in the 2009 Broadway Series – have your ad seen by thousands of theatregoers in the peak of summer!*

To advertise, Call Pam Young at 516-459-1893,  
or email [pam.young@searlesgraphics.com](mailto:pam.young@searlesgraphics.com)

**OUR FUTURE DEPENDS ON THE DREAMS OF OUR YOUTH –  
INSPIRE YOUR KIDS AND GIVE THEM A CULTURAL FOUNDATION...**

# CHILDREN'S THEATER **YOU'LL BE GLAD YOU DID**

## PINOCCHIO



**Friday, July 10**  
at 10:30 am & 1 pm

*Performed by Yates Musical  
Theatre on the Patchogue  
Theatre stage*

The whimsical and magical  
story of a puppet on his  
journey to becoming a real boy  
is told in song and dance.



**Friday, July 17 at 10:30 am & 1 pm**

*Performed by Theaterworks USA on the Patchogue Theatre stage*

We bring back the popular- Dinosaurs, from Theaterworks USA.



**Friday, July 24**  
at 10:30 am & 1 pm

*Performed by Yates Musical  
Theatre on the Patchogue  
Theatre stage*

A classic story of good over  
evil and love enduring, with  
songs, duels, antics, comedy  
and a happy ending all rolled  
into one.



**Friday, August 7 at 10:30 am,**  
**Friday, August 14, 21 at 10:30 am & 1 pm**  
**Saturday, August 8, 15, 22 at 10:30 am**

*Presented by Gateway Playhouse on our Bellport stage*

Join Dorothy, the Lion, the Tinman, the Scarecrow  
and Toto too, over the rainbow to the Land of Oz. The  
story and all the wonderful songs you know and love  
is performed by a company of professionally trained  
young actors that your kids will delight in meeting.



**Friday, August 28**  
at 10:30 am & 1 pm

*Performed by Yates Musical  
Theatre on the Patchogue  
Theatre stage*

The classic Brother's Grimm story  
spins musical gold as a fair young  
maiden marries a prince due to  
her art with a spinning wheel.

**Gateway's Children's Theatre is the perfect backdrop for customized  
birthday parties and camp excursions.**

**All Seats: \$10.00 • 25 or more : \$9.00 • 100+: \$5.00** (Certain restrictions apply)

**RESERVED SEATING**



Sorry, Children aged 2 or older only. No infants please, as they disturb others from enjoying the performance.  
Every child, out of the womb, must enter with a purchased ticket.

\*Shows subject to change without notice

**CALL OR LOG ON FOR INFORMATION: 631-286-1133**

# Gateway PLAYHOUSE

Long Island's Premier  
Professional Theater

**2009 Broadway Series**

**60**  
*Years of  
Theater*

**MISS SAIGON** July 8-July 25 In Patchogue

**THE DROWSY CHAPERONE** July 29-August 22  
In Bellport

**DIRTY ROTTEN  
SCOUNDRELS** August 26-September 12  
In Patchogue

**A CHORUS LINE** September 16-October 11  
In Bellport



1-888-4TIXNOW [WWW.GATEWAYPLAYHOUSE.COM](http://WWW.GATEWAYPLAYHOUSE.COM)

# PORTERS

— *on the lane* —

RESTAURANT • BAR • CATERING



*Every Thursday Evening Piano Bar with  
Henry Haid from the Broadway musical "Movin' Out"*

For reservations or catering info:

**631-803-6067**

**[www.portersonthelane.com](http://www.portersonthelane.com)**

email: [PortersBellport@aol.com](mailto:PortersBellport@aol.com) fax: 631-803-6069

19 Bellport Lane • Bellport Village NY 11713